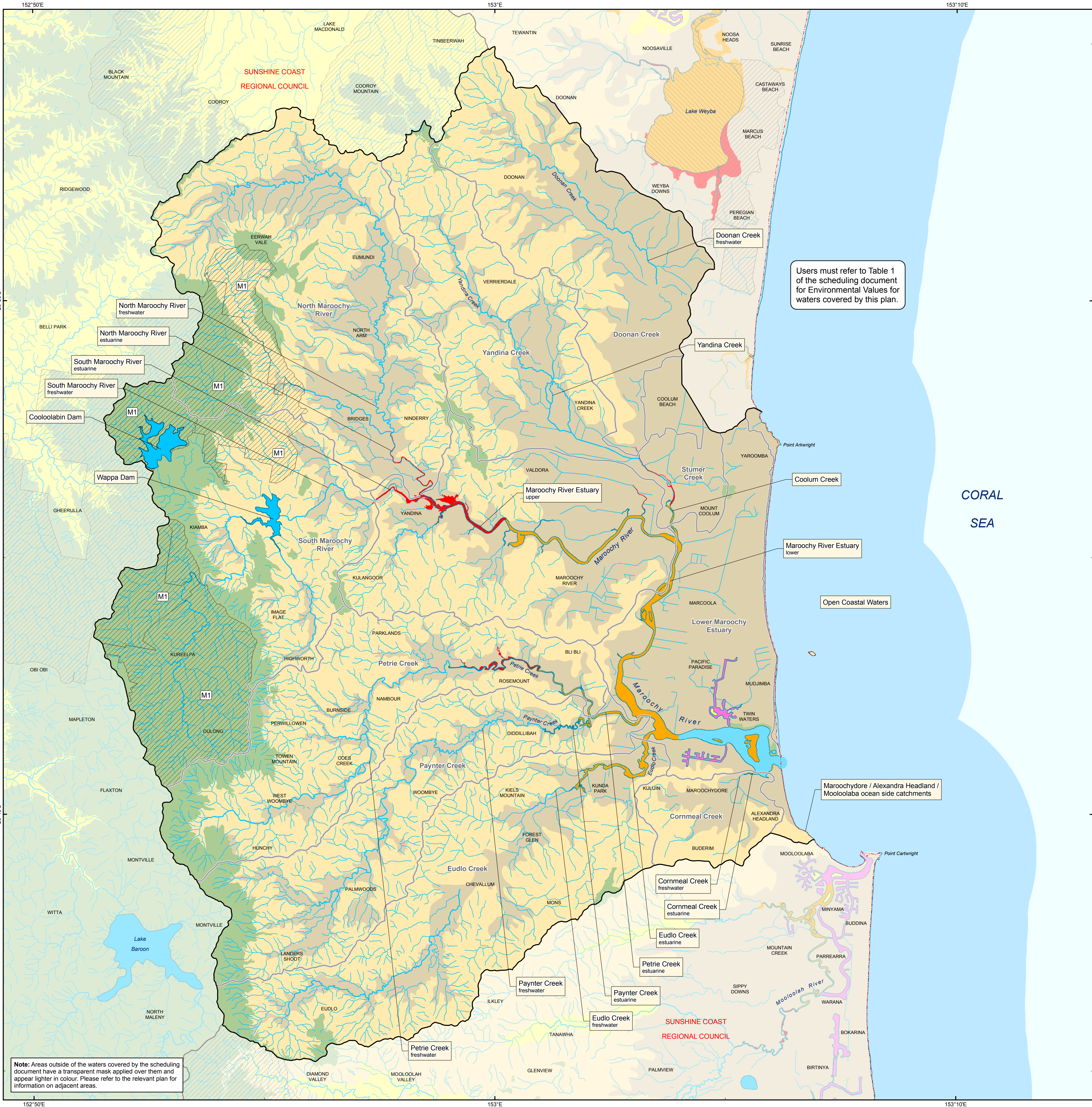


MAROOCHY RIVER, INCLUDING ALL TRIBUTARIES OF THE RIVER  
Part of Basin 141



**Key to Environmental Values**

Aquatic Ecosystems  
Irrigation  
Farm Supply  
Stock Water  
Aquaculture  
Human Consumer

Primary Recreation  
Secondary Recreation  
Visual Recreation  
Drinking Water  
Industrial Use  
Cultural & Spiritual Values

**Legend**

River / creek  
Coastline  
Sub-catchment boundary  
Boundary of waters covered by the scheduling document  
Local government boundary

**Management Intent for Waters**

High ecological value freshwaters (maintain)  
High ecological value marine / estuarine waters (maintain)

**Water Types**

**Marine / estuarine waters**

Open coastal waters  
Enclosed coastal / lower estuary  
Middle estuary  
Upper estuary  
Tidal canals / constructed estuaries / marinas / boat harbours

**Freshwaters**

Lowland freshwaters  
Wallum / tannin freshwaters  
Coastal freshwaters  
Upland freshwaters  
Lakes / reservoirs

Note for users: Areas of the catchment that are not shown on this map as having a management intent of high ecological values, slightly disturbed or highly disturbed, have a management intent of moderately disturbed.

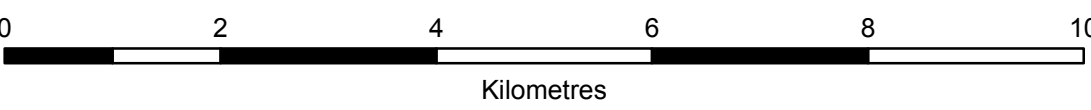
Environmental Protection (Water) Policy 2009  
South-east Queensland Map Series  
PLAN WQ1411

Publication date: July 2010

This plan forms part of the Maroochy River Environmental Values and Water Quality Objectives scheduling document, prepared pursuant to the *Environmental Protection (Water) Policy 2009*.



Projection: Map Grid of Australia (MGA) Zone 56  
Horizontal Datum: Geocentric Datum of Australia 1994 (GDA94)



Scale of 1:70,000 when printed @ A1



**Disclaimer**

Whilst every care is taken to ensure the accuracy of this product, the Department of Environment and Resource Management makes no representations or warranties about its accuracy, reliability, completeness or suitability for any particular purpose and disclaims all responsibility and all liability (including without limitation, liability in negligence) for all expenses, losses, damages (including indirect or consequential damage) and costs which you may incur as a result of the product being inaccurate or incomplete in any way and for any reason.

Includes GEODATA product © Commonwealth of Australia (Geoscience Australia) 2010.

© The State of Queensland (Department of Environment and Resource Management) 2010